



## POLYMAR<sup>®</sup> traffic

HIGH-VALUE TARPAULINS FOR  
TRUCKS, TRANSPORT COVERINGS AND MORE

**Achtung!**  
Aufgrund der Reproduktion ist die Farbdarstellung nicht verbindlich  
und kann je nach Browser und Bildschirm vom Original abweichen.

**Attention!**  
By reason of reproduction colour display is not bindingly and can  
differ to original due to browser and monitor.

# POLYMAR® HOCHGLANZ 8210



907 weiß RAL 9010  
218, 250, 300, 320 cm  
85.83", 98.43", 118.11", 125.98"



142 creme  
300 cm  
118.11"



123 beige  
250 cm  
98.43" RAL 1014



168 zinkgelb  
250 cm  
98.43" RAL 1018



119 brillantgelb  
250 cm  
98.43"



148 signalgelb  
300 cm  
118.11" RAL 1003



244 reinorange  
250 cm  
98.43" RAL 2004



370 karminrot  
250 cm  
98.43" RAL 3002



581 himmelblau  
250 cm  
98.43" RAL 5015



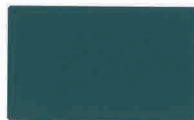
543 königsblau  
218, 250, 300 cm  
85.83", 98.43", 118.11"



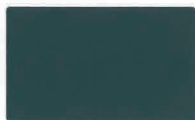
537 enzianblau  
250 cm  
98.43" RAL 5010



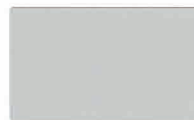
566 kobaltblau  
250 cm  
98.43" RAL 5013



636 hollandgrün RAL 6026  
218, 250, 300 cm  
85.83", 98.43", 118.11"



682 russischgrün  
250 cm  
98.43" RAL 6028



729 lichtgrau  
250 cm  
98.43" RAL 7035



705 hellgrau  
218, 250, 300 cm  
85.83", 98.43", 118.11"



712 steingrau  
250 cm  
98.43"



763 alugrau  
250 cm  
98.43" RAL 7037



905 tiefschwarz  
250, 300 cm  
98.43", 118.11" RAL 9005



911 silber  
250 cm  
98.43" RAL 9006

# POLYMAR® BW-TL 8305-0253 8551



691 N bronzegrün  
150, 250 cm  
59.06", 98.43" RAL 6031

# POLYMAR® HOCHGLANZ 8205



	008 transparent 250 cm 98.43"		907** weiß RAL 9010 150, 204, 218, 250, 275, 300, 320 cm		141 perlweiß 250 cm 98.43"		143 hellelfenbein 250 cm 98.43"
	123 beige 250 cm 98.43"		168 zinkgelb 250 cm 98.43"		101 kosmosgelb RAL 1021 218, 250 cm 85.83", 98.43"		119 brillantgelb 250 cm 98.43"
	148 signalgelb RAL 1003 218, 250, 275, 300 cm 85.83", 98.43", 108.27", 118.11"		175 melonengelb 250 cm 98.43"		137 narzissengelb 250 cm 98.43"		206 tieforange 250 cm 98.43"
	221 orange 218, 250 cm 85.83", 98.43"		244 reinorange 250, 300 cm 98.43", 118.11"		290 verkehrsrot 250 cm 98.43"		340 coca cola* 250 cm 98.43"
	356 feuerrot 250, 300 cm 98.43", 118.11"		370 karminrot RAL 3002 218, 250, 275, 300 cm 85.83", 98.43", 108.27", 118.11"		311 beajouais 250 cm 98.43"		323 viola 250 cm 98.43"
	549 lichtblau 218, 250 cm 85.83", 98.43"		583 wasserblau 250 cm 98.43"		543 königsblau 218, 250, 300 cm 85.83", 98.43", 118.11"		572 blau 250 cm 98.43"
	537 enzianblau RAL 5010 218, 250, 275 cm 85.83", 98.43", 108.27"		557 ultrablau 218, 250 cm 85.83", 98.43"		544 ultramarin 250, 275 cm 98.43", 108.27"		566 kobaltblau RAL 5013 218, 250, 275 cm 85.83", 98.43", 108.27"
	619 gelbgrün 250 cm 98.43"		602 verkehrsgrün 250 cm 98.43"		663 smaragdgrün 218, 250 cm 85.83", 98.43"		636 hollandgrün RAL 6026 218, 250, 275 cm 85.83", 98.43", 108.27"
	682 russischgrün 250 cm 98.43"		679 moosgrün 250 cm 98.43"		729 lichtgrau RAL 7035 218, 250, 275, 300 cm 85.83", 98.43", 108.27", 118.11"		717 blassgrau 250, 275 cm 98.43", 108.27"
	705 hellgrau 218, 250 cm 85.83", 98.43"		788 staubgrau 250 cm 98.43"		763 alugrau 218, 250 cm 85.83", 98.43"		782 anthrazit 250 cm 98.43"
	830 schoko 250 cm 98.43"		905 tiefschwarz RAL 9005 218, 250, 275, 300 cm 85.83", 98.43", 108.27", 118.11"		911 silber RAL 9006 250, 275, 300 cm 98.43", 108.27", 118.11"		

\* Mit offizieller Genehmigung der:  
Officially approved by:  
Avec l'autorisation officielle de:  
Con la autorización oficial de:  
Con l'approvazione ufficiale di:  
**Coca Cola GmbH**

\*\* 907 weiß RAL 9010  
59.06", 80.31", 85.83", 98.43",  
108.27", 118.11", 125.98"

# POLYMAR® HOCHGLANZ 8556



907 weiß RAL 9010  
250, 300, 320 cm  
98.43", 118.11", 125.98"



916 verkehrsweiß RAL 9016  
300 cm  
118.11"



141 perlweiß RAL 1013  
300 cm  
118.11"



143 helllefenbein RAL 1015  
300 cm  
118.11"



123 beige RAL 1014  
300 cm  
118.11"



168 zinkgelb RAL 1018  
300 cm  
118.11"



101 kosmosgelb RAL 1021  
300 cm  
118.11"



107 ginstergelb RAL 1032  
300 cm  
118.11"



119 brillantgelb  
300 cm  
118.11"



148 signalgelb RAL 1003  
300 cm  
118.11"



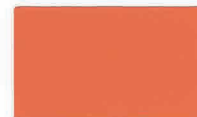
175 melonengelb RAL 1028  
300 cm  
118.11"



137 narzissengelb RAL 1007  
300 cm  
118.11"



221 orange RAL 2008  
300 cm  
118.11"



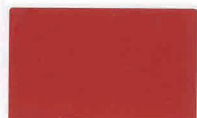
244 reinorange RAL 2004  
300 cm  
118.11"



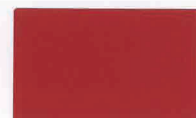
205 internationalorange  
300 cm  
118.11"



290 verkehrsrot RAL 3020  
300 cm  
118.11"



356 feuerrot RAL 3000  
300, 320 cm  
118.11", 125.98"



370 karminrot RAL 3002  
300 cm  
118.11"



371 burgund  
300 cm  
118.11"



571 eisblau  
300 cm  
118.11"



549 lichtblau RAL 5012  
300 cm  
118.11"



586 lagune  
300 cm  
118.11"



543 königsblau  
300 cm  
118.11"



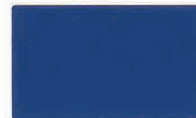
537 enzianblau RAL 5010  
300, 320 cm  
118.11", 125.98"



520 mittelblau  
300 cm  
118.11"



557 ultrablau  
300, 320 cm  
118.11", 125.98"



544 ultramarin RAL 5002  
300 cm  
118.11"



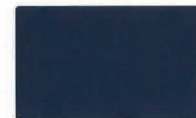
541 dunkelblau  
300, 320 cm  
118.11", 125.98"



552 saphirblau RAL 5003  
300 cm  
118.11"



566 kobaltblau RAL 5013  
300 cm  
118.11"



597 nachtblau RAL 5011  
300 cm  
118.11"



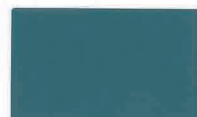
619 gelbgrün RAL 6018  
300 cm  
118.11"



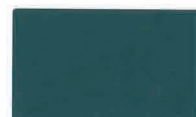
663 smaragdgrün RAL 6001  
300 cm  
118.11"



602 verkehrsgrün RAL 6024  
300 cm  
118.11"



634 türkisgrün  
300 cm  
118.11"



636 hollandgrün RAL 6026  
300 cm  
118.11"



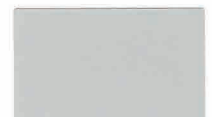
623 tanne  
300 cm  
118.11"



679 moosgrün RAL 6005  
300 cm  
118.11"



746 grauweiß RAL 9002  
300 cm  
118.11"



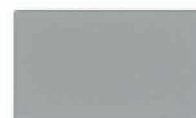
729 lichtgrau RAL 7035  
300 cm  
118.11"



717 blassgrau  
300 cm  
118.11"



705 hellgrau  
300 cm  
118.11"



711 verkehrsgrau RAL 7042  
300 cm  
118.11"



788 staubgrau  
300 cm  
118.11"



763 alugrau RAL 7037  
300 cm  
118.11"



830 schoko RAL 8017  
300 cm  
118.11"



905 tiefschwarz RAL 9005  
300 cm  
118.11"



911 silber RAL 9006  
300, 320 cm  
118.11", 125.98"

# POLYMAR®

## Gesamtgewicht

Total weight, Poids total  
Peso total, Peso totale  
Gramatura całkowita, Общий вес

# 8210

**650 g/m<sup>2</sup>**  
DIN EN ISO 2286-2  
**19.1 oz./sq.yd.**  
ASTM D-751.10

# 8205

**680 g/m<sup>2</sup>**  
DIN EN ISO 2286-2  
**20 oz./sq.yd.**  
ASTM D-751.10

# 8556

**900 g/m<sup>2</sup>**  
DIN EN ISO 2286-2  
**26.5 oz./sq.yd.**  
ASTM D-751.10

# 8551

**700 g/m<sup>2</sup>**  
DIN EN ISO 2286-2  
**20.3 oz./sq.yd.**  
ASTM D-751.10

## Reißkraft

Tensile strength  
Résistance rupture  
Resistencia rotura  
Resistenza alla trazione  
Odporność na zerwanie  
Прочность на растяжение

## Kette/Schluß

warp/weft  
chaîne/trame  
cadena/trama  
ordito/trama  
osnowa/wątek  
основа/уток

**2500/2500**  
**N/50 mm**  
DIN EN ISO 1421/V1  
**320 / 300 lbs. / in.**  
ASTM D-751  
Procedure B

**3000/3000**  
**N/50 mm**  
DIN EN ISO 1421/V1  
**320 / 310 lbs. / in.**  
ASTM D-751  
Procedure B

**4300/4000**  
**N/50 mm**  
DIN EN ISO 1421/V1  
**430 / 400 lbs. / in.**  
ASTM D-751  
Procedure B

**>2800**  
**N/50 mm**  
DIN EN ISO 1421/V1  
**320 / 310 lbs. / in.**  
ASTM D-751  
Procedure B

## Weiterreißfestigkeit

Tear strength  
Résistance déchirure  
Resistencia al desgarro  
Resistenza alla lacerazione  
Odporność na rozdarcie  
Прочность на разрыв

## Kette/Schluß

warp/weft  
chaîne/trame  
cadena/trama  
ordito/trama  
osnowa/wątek  
основа/уток

**250/250 N**  
DIN 53363  
**35 / 35 lbs.**  
ASTM D-751  
(8" x 10") Specimen

**300/300 N**  
DIN 53363  
**50 / 50 lbs.**  
ASTM D-751  
(8" x 10") Specimen

**500/500 N**  
DIN 53363  
**70 / 90 lbs.**  
ASTM D-751  
(8" x 10") Specimen

**>250/>250 N**  
DIN 53363  
**70 / 70 lbs.**  
ASTM D-751  
(8" x 10") Specimen

## Haftfestigkeit

Adhesion, Adhérence  
Adherencia, Adesione  
Adhezja  
Адгезия

**100 N/5 cm**  
PA 09.03 (intern)  
**11 lbs. / in.**  
ASTM D-751  
RF Weld

**100 N/5 cm**  
PA 09.03 (intern)  
**11 lbs. / in.**  
ASTM D-751  
RF Weld

**100 N/5 cm**  
PA 09.03 (intern)  
**11 lbs. / in.**  
ASTM D-751  
RF Weld

**100 N/5 cm**  
PA 09.03 (intern)  
**11 lbs. / in.**  
ASTM D-751  
RF Weld

## Temperaturbeständigkeit

Temperature resistance  
Températures maximales d'utilisation  
Resistencia a la temperatura  
Resistenza alla temperatura  
Odporność na temperaturę  
Температурный режим

**-40 °C / +70 °C**  
DIN EN 1876-1  
PA 07.04 (intern)  
**-40 °F / +158 °F**  
ASTM D-2136  
PA 07.04 (intern)

**-40 °C / +70 °C**  
DIN EN 1876-1  
PA 07.04 (intern)  
**-40 °F / +158 °F**  
ASTM D-2136  
PA 07.04 (intern)

**-40 °C / +70 °C**  
DIN EN 1876-1  
PA 07.04 (intern)  
**-40 °F / +158 °F**  
ASTM D-2136  
PA 07.04 (intern)

**-40 °C / +80 °C**  
DIN 53361  
PA 07.04 (intern)  
**-40 °F / +176 °F**  
ASTM D-2136  
PA 07.04 (intern)

## Brennverhalten

Fire behaviour  
Réaction au feu  
Comportamiento a la llama  
Comportamento alla fiamma  
Ogniodporność  
Возгораемость

**ISO 3795**  
<100 mm/min.

**ISO 3795**  
<100 mm/min.

**ISO 3795**  
<100 mm/min.

**Nachbrennzeit < 2sec**  
burning time after flame stop <2 sec  
Durée d'inflammation après extinction de la flamme <2 sec  
Tiempo de combustión posterior <2 seg.  
Tempo di postcombustione <2 sec  
Czas spalania po ustaniu płomienia <2 sekundy  
время горения после пламени <2 секунд  
DIN EN ISO 6941

# POLYMAR® FR

# 8212

# 8509

# 8540

## Schwerentflammbar

Passes firetest  
Réaction au feu  
Ignífugo segun norma  
Ignífugo secondo  
Certyfikaty ogniodporności  
Огнестойкость

**BS 7837**  
**California T 19**  
D.M. 26.06.84 (UNI 9177): CL 2  
**DIN 4102: B1**  
**NFP 92507: M2**  
**EN 13501-1: B-s2-d0**  
**GOST: G1**

**BS 7837**  
D.M. 26.06.84 (UNI 9177): CL 2  
**DIN 4102: B1**  
**NFP 92507: M2**  
**EN 13501-1: B-s2-d0**  
**GOST: G1**

**BS 7837**  
D.M. 26.06.84 (UNI 9177): CL 2  
**DIN 4102: B1**  
**NFP 92507: M2**  
**EN 13501-1: B-s3-d0**  
**GOST: G1**  
**ÖNorm: B1**

Bei den angegebenen technischen Daten handelt es sich um Durchschnittswerte. Geringfügige Farbschwankungen vorbehalten. RAL-Farben in Anlehnung. Stets Gültigkeit der FR-Zulassung prüfen. Alle Mehler Technologies-Produkte entsprechen der EU-Verordnung REACH (Registration, Evaluation, Authorisation of Chemicals). Die Herstellung unserer technischen Textilien ist nach DIN 9001 zertifiziert. Weitere Varianten auf Anfrage, Programmänderungen vorbehalten.

The indicated technical specifications are average values. Colors are subject to slight variations. References made to RAL are indications only. Always check the validity of fire certificate. All Mehler Technologies products are in accordance with the European REACH directive (Registration, Evaluation and Authorisation of Chemicals). Manufactured in Germany under the internationally recognized standard of quality DIN 9001. Other versions upon request, program changes reserved.

Les données techniques indiquées sont des valeurs moyennes. Sous réserve de légers changements de coloris. Coloris approchants RAL. Veuillez toujours vérifier la validité des certificats anti-feu. Tous les produits de Mehler Technologies sont conformes à la réglementation Européenne REACH – enregistrement, évaluation et autorisation des substances chimiques. Toutes nos fabrications sont européennes selon les standards de qualité internationaux DIN 9001. Autres versions sur demande, sous réserve de modifications de la gamme.

Características técnicas indicadas en valores medios. Sujetas a pequeñas alteraciones del color. Referencias al RAL son solo indicativas. Siempre verificar la validez del certificado de ignición. Todos los productos de Mehler Technologies cumplen la normativa REACH (Registration, Evaluation and Authorisation of Chemicals [Registro, Evaluación y Autorización de Sustancias Químicas]). La fabricación de nuestros productos esta certificada según la DIN 9001. Otras variantes bajo consulta. Posibles modificaciones sin previo aviso.

I dati tecnici sono la risultanza di valori medi di produzione. Sono possibili leggere variazioni di colore. I colori sono prodotti in rispondenza alla scala RAL. Verificare sempre la validità delle certificazioni. Tutti i prodotti Mehler Technologies rispondono alla normativa REACH (Registration, Evaluation and Authorisation of Chemicals). La produzione dei nostri tessuti è certificata secondo DIN 9001. Su richiesta, si possono produrre altre versioni. Modifiche della gamma sempre possibili.

Все указанные технические данные базируются на основе выявленных средних показателей. Цвета приближены к RAL. Незначительные цветовые отклонения возможны. Все продукты Mehler Technologies соответствуют ЕС директиве «REACH» (Registration, Evaluation and Authorisation of Chemicals). Проверьте срок действия сертификата пожарной безопасности. Произведено и сертифицировано в Германии согласно нормативам стандартов качества DIN 9001. Другие варианты по запросу. Возможны изменения в программе.

8205 + 8509: entspricht (DIN) EN 12641-1  
selon la norme (DIN) EN 12641-1  
corrisponde a (DIN) EN 12641-1

complies with (DIN) EN 12641-1  
corresponde a (DIN) EN 12641-1  
Соответствует (DIN) EN 12641-1

POLYMAR® ist recycelbar.  
POLYMAR® is recyclable.  
POLYMAR® est recyclable.  
POLYMAR® es reciclable.  
POLYMAR® è riciclabile.  
POLYMAR® рециркулируется.

8556 + 8540: entspricht (DIN) EN 12641-2  
selon la norme (DIN) EN 12641-2  
corrisponde a (DIN) EN 12641-2

complies with (DIN) EN 12641-2  
corresponde a (DIN) EN 12641-2  
Соответствует (DIN) EN 12641-2



**Sales companies and Sales offices**

**France / Low & Bonar Lyon S.A.R.L.**  
 Bât. A1, 3 chemin des Cytises  
 F-69340 Francheville  
 info-fr@mehler-technologies.com

**U.K. / Low & Bonar Oldham Ltd.**  
 Hollinwood Business Centre  
 Albert Street, Oldham,  
 Lancs. OL8 3QL  
 info-uk@mehler-technologies.com

**Italy / Low & Bonar Italy S.r.l.**  
 Via Enrico Fermi 52/A  
 I-20019 Settimo Milanese MI  
 info-it@mehler-technologies.com

**Poland / Low & Bonar Poland Sp. z o.o.**  
 ul. Mikołajczyka 31a  
 PL-41-200 Sosnowiec  
 info-pl@mehler-technologies.com

**Latvia / SIA "Low & Bonar Latvia"**  
 Krustpils iela 54 E  
 Rīga, LV-1057  
 info-lv@mehler-technologies.com

**Romania / Low & Bonar Romania S.R.L.**  
 Str. Linia de Centura Nr.2, D2  
 RO-077175 Stefanesti de Jos  
 (Judetul Ilfov)  
 info-ro@mehler-technologies.com

**Turkey / Low and Bonar Turkey  
 Teknik Tekstil Ticaret Limited Sirketi**  
 Başakşehir San. Sit.  
 A Blok No: 22, Başakşehir  
 TR- İstanbul  
 info-tr@mehler-technologies.com

**U.S.A / Low & Bonar Martinsville Inc.**  
 220 B Cabell Street  
 Martinsville, VA 24112  
 info-usa@mehler-technologies.com

**United Arab Emirates /  
 Low & Bonar Middle East Trading LLC**  
 Sheikh Zayed Road  
 Sidra Tower, Office No: 1007  
 Dubai-UAE  
 info-uae@mehler-technologies.com

**India /  
 Low & Bonar India Pvt. Ltd.**  
 924, 9th Floor, Wave Silver Tower, Sector 18,  
 Noida 201 301, UP, India  
 info-in@mehler-technologies.com

**Malaysia /  
 Low & Bonar South East Asia**  
 Suite 20-01 & 20-02B, Level 20,  
 The Pinnacle  
 Persiaran Lagoon Bandar Sunway  
 Subang Jaya, 47500 Malaysia  
 info-mys@mehler-technologies.com

**Russia / Low & Bonar Rus OOO**  
 Sadovnicheskaya embankment 79  
 115035 Moscow  
 info-ru@mehler-technologies.com

**Australia / Indtex Australia Pty Ltd.**  
 PO Box 7243, Beaumaris  
 Melbourne VIC 3193  
 info-aus@mehler-technologies.com

**China / Eusource International**  
 Guangzhou Office  
 R.806 Goayage, Tianyu Garden  
 152 Linhe Zhong Road  
 Guangzhou 510610  
 info-chn@mehler-technologies.com

**Manufacturing and sales**

**Low & Bonar GmbH**  
 Rheinstrasse 11  
 D-41836 Hüchelhoven  
 info-de@mehler-technologies.com

**Low & Bonar GmbH**  
 Edeltzeller Strasse 44  
 D-36043 Fulda  
 info-de@mehler-technologies.com

**Low & Bonar Czech s.r.o.**  
 Karla Čapka 1085  
 CZ-512 51 Lomnice nad Popelkou  
 info-cz@mehler-technologies.com