



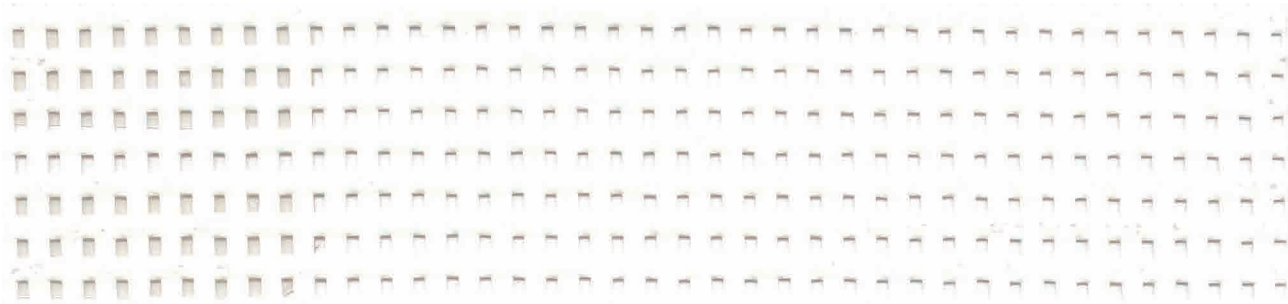
## VALMEX<sup>®</sup> façade

HIGH-VALUE TEXTILES FOR  
PERMANENT FAÇADES

**Achtung!**  
Aufgrund der Reproduktion ist die Farbdarstellung nicht verbindlich  
und kann je nach Browser und Bildschirm vom Original abweichen.

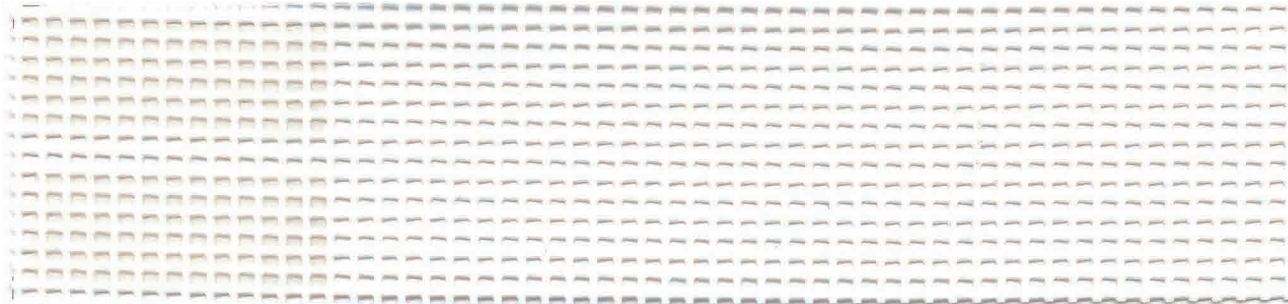
**Attention!**  
By reason of reproduction color display is not bindingly and can differ  
to original due to browser and monitor.

# VALMEX® TF 300



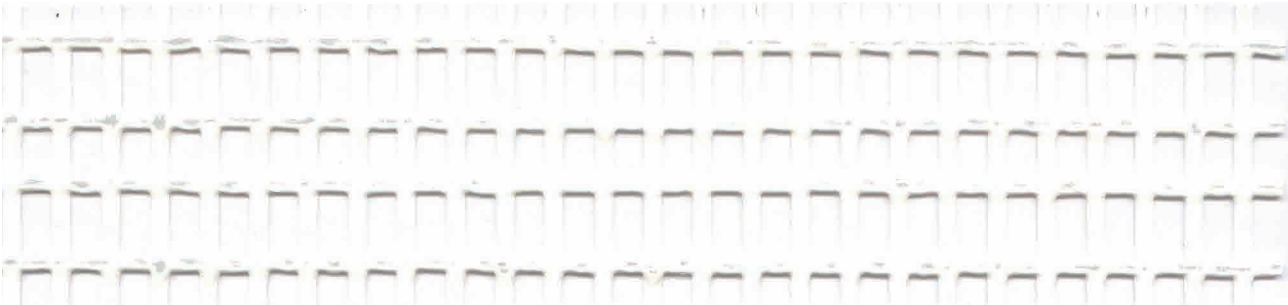
7283 5246 958958 White

# VALMEX® TF 400



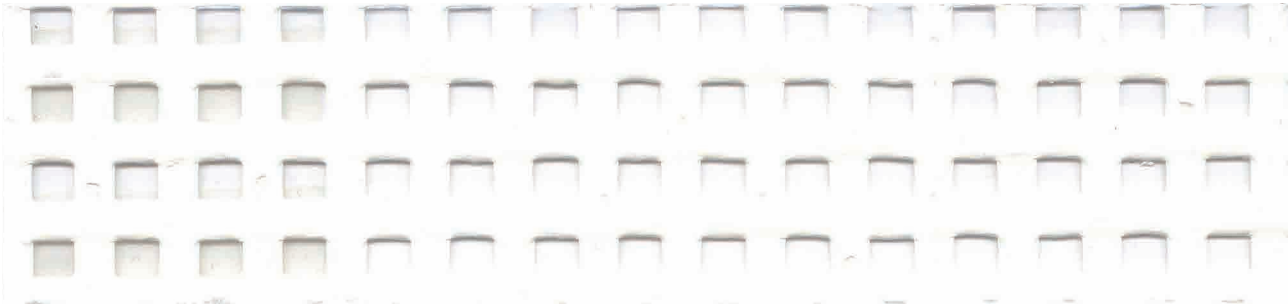
7280 5246 958958 White

# VALMEX® TF 500



7285 5246 958958 White, only on request

# VALMEX® TF 600



7286 5246 958958 White

With more than 80 years of experience Mehler Technologies is your reliable partner for tensile architecture applications. Over the decades we built up experience in the coated technical textile industry as well as a huge knowledge base.

Our **VALMEX®** façade product range is meant for building or renewing façades. It offers numerous design options. From hard and sharp edges to smooth and sculptural curvatures.

**VALMEX®** façade meshes are made for long lasting cladding applications. The resistance, durability and permeability have been the key characteristics through-out

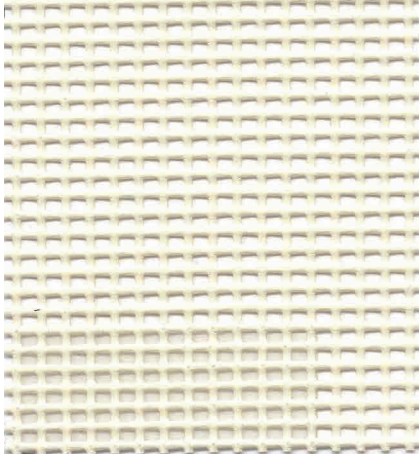
the development process. The hi-tech meshes are composed of carefully selected raw materials. An extremely tight high-tenacity PES base fabric with vinyl coating, protected by the unique and weldable MEHATOP® F1 PVDF top finish. This results in technical perfection: the first choice for any long lasting cladding application.

Besides their different appearance the four façade meshes are mainly characterized by two values: tensile strength and degree of openness. Upon request we offer special top finishes, like MEHATOP® N and our special print lacquer. Furthermore, we have a new range of colors available. If your color is still not among these suggestions, please don't hesitate to get in touch with us!

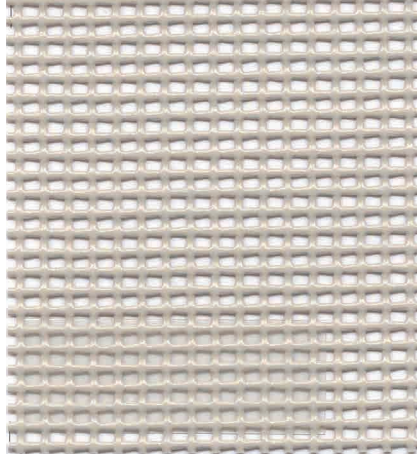


<b>VALMEX®</b>			<b>TF 300</b>	<b>TF 400</b>	<b>TF 500</b>	<b>TF 600</b>
<b>Product No.</b>			<b>7283 5256</b>	<b>7280 5256</b>	<b>9340 5256</b>	<b>7286 5256</b>
<b>Material composition</b>						
Finish		Multi-composed lacquering with highly concentrated PVDF mixture on both sides, weldable without grinding, protected against microbial and fungal attack, UV-protected				
	<b>Measurement methods/ Classifications</b>	<b>Unit</b>				
Base fabric	DIN ISO 2076		Polyester	Polyester	Polyester	Polyester
Yarn count	DIN ISO 2060	dtex	1100	3300 / 2200	1670 / 8800	2200 / 2200
Low-wick yarn treatment	Methylenblue liquid method	mm	< 5	< 5		<5
Total weight	EN ISO 2286-2	g/m <sup>2</sup>	700	420	500	1050
Fabric thickness		mm	0.94	0.77	1.25	1.46
Fabric openness	PA 12.03	%	approx. 18 %	approx. 34 %	approx.50 %	approx. 24%
<b>Mechanical properties</b>						
Tensile strength (warp/weft)	DIN EN ISO 1421/V1	N/50 mm	4200 / 3000	4000 / 3000	4000 / 3200	6000 / 5500
Tear strength (warp/weft)	DIN 53363	N	800 / 650	800 / 550	1100 / 800	1800 / 1800
Elongation at break (warp/weft)	DIN EN ISO 1421/V1	%	22 / 23	25 / 26	22 /32	25 / 26
<b>Physical properties</b>						
Adhesion	PA 09.03 (intern)	N/cm	20	20	approx. 15	20
Light fastness	DIN EN ISO 105 B02		> 6	> 6	>6	>6
Seam strength	DIN 53354	N/50 mm	1400	1400	1200	4000
Air permeability	EN ISO 9237	l/m <sup>2</sup> *sec	2243	6195	7040	3560
Cold resistance	DIN EN 1876-1	°C	-20	-20	-20	-20
Heat resistance	PA 07.04	°C	+70	+70	+70	+70
Fire resistance	Classification		DIN 4102: B1	DIN 4102: B1 BS 7837 EN 13501-1: B-s2-d0 NFP 92507:M1 VKF Richtlinie 5.2 California T19 NFPA 701 ASTM E84: Class A	ISO 3795 <100 mm/min.	DIN 4102: B1 BS 7837 NFPA 701 ASTM E84: Class A
Standard roll width		cm	320	320	320	320

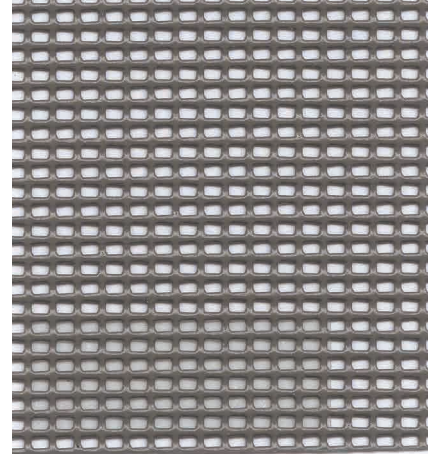
# VALMEX® TF 400 Color options



7280 5246 150150 Champagner



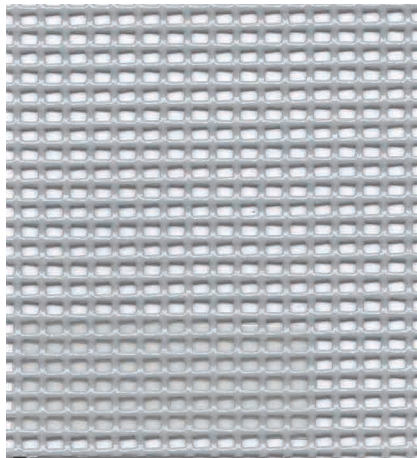
7280 5246 887887 Gobi



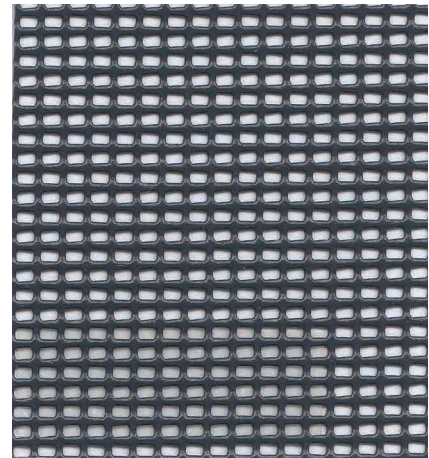
7280 5246 846846 Taupe



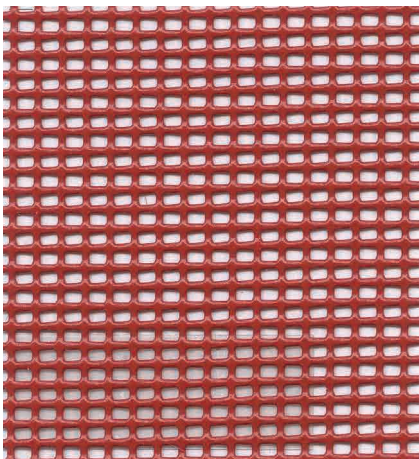
7280 5246 729729 Light Gray



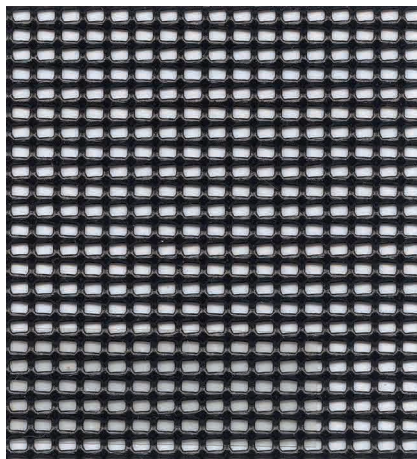
7280 5246 717717 Pale Gray



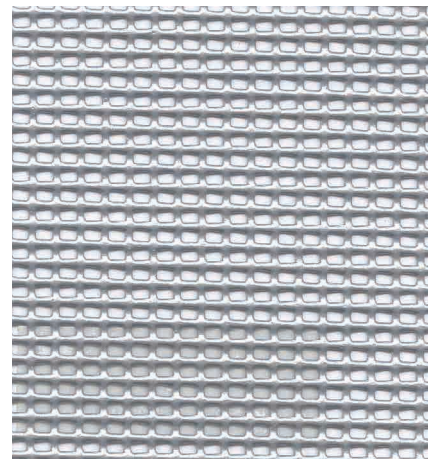
7280 5246 782782 Anthracite Gray



7280 5246 356356 Fire Red



7280 5246 905905 Black



7280 5290 911911 Silver

Bei den angegebenen technischen Daten handelt es sich um Durchschnittswerte. Geringfügige Farbschwankungen vorbehalten. RAL-Farben in Anlehnung. Stets Gültigkeit der FR-Zulassung prüfen. Alle Mehler Technologies-Produkte entsprechen der EU-Verordnung REACH - Registration, Evaluation, Authorisation of Chemicals. Die Herstellung unserer technischen Textilien ist nach DIN 9001 zertifiziert. Weitere Varianten auf Anfrage, Programmänderungen vorbehalten. VALMEX® ist recycelbar.

The indicated technical specifications are average values. Colours are subject to slight variations. References made to RAL are indications only. Always check the validity of fire certificate. All Mehler Technologies products are in accordance with the European REACH directive - Registration, Evaluation and Authorisation of Chemicals. Manufactured in Germany under the internationally recognized standard of quality DIN 9001. Other versions upon request, program changes reserved. VALMEX® is recyclable.

Les données techniques indiquées sont des valeurs moyennes. Sous réserve de légers changements de coloris. Coloris approchants RAL. Veuillez toujours vérifier la validité des certificats antifeu. Tous les produits Mehler Technologies sont conformes à la réglementation Européenne REACH - enregistrement, évaluation et autorisation des substances chimiques. Toutes nos fabrications sont européennes selon les standards de qualité internationaux DIN 9001. Autres versions sur demande, sous réserve de modifications de la gamme. VALMEX® est recyclable.

Características técnicas indicadas en valores medios. Sujetas a pequeñas alteraciones del color. Referencias al RAL son solo indicativas. Siempre verificar la validez del certificado de ignición. Todos los productos de Mehler Technologies cumplen la normativa REACH - Registration, Evaluation and Authorisation of Chemicals (Registro, Evaluación y Autorización de Sustancias Químicas). La fabricación de nuestros productos está certificada según la DIN 9001. Otras variantes bajo consulta. Posibles modificaciones sin previo aviso. VALMEX® es reciclable.

I dati tecnici sono la risultanza di valori medi di produzione. Sono possibili leggere variazioni di colore. I colori sono prodotti in rispondenza alla scala RAL. Verificare sempre la validità delle certificazioni. Tutti i prodotti Mehler Technologies rispondono alla normativa REACH - Registration, Evaluation and Authorisation of Chemicals. La produzione dei nostri tessuti è certificata secondo DIN 9001. Su richiesta, si possono produrre altre versioni. Modifiche della gamma sempre possibili. VALMEX® è riciclabile.

Все указанные технические данные базируются на основе выявленных средних показателей. Цвета приближены к RAL. Незначительные цветовые отклонения возможны. Все продукты Mehler Technologies соответствуют ЕС директиве -REACH- - Registration, Evaluation and Authorisation of Chemicals. Проверьте срок действия сертификата пожарной безопасности. Произведено и сертифицировано в Германии согласно нормативам стандартов качества DIN 9001. Другие варианты по запросу. Возможны изменения в программе. VALMEX® рециркулируется.



Building façade



Stadium façade



Printed building façade



Shopping center roof



Decorative façade elements



Event pavilion



Eco-care is our guideline of handling energy and resources, the use of environmentally sustainable components, and it describes our activities in the area of recycling coated fabrics.



Registration, Evaluation and Authorisation of Chemicals

Low & Bonar strictly selects all product components in conjunction with the most stringent EU directives and is fulfilling them as a pioneer in this industry.



Low & Bonar honours its commitment to environmental responsibility and sustainability by participating in VinylPlus: The voluntary commitment of the PVC industry.



We are in an ongoing process to enhance our sustainability performance. One crucial factor is that all our fabrics are 100% recyclable.



**Sales companies and Sales offices**

**France / Low & Bonar Lyon S.A.R.L.**  
 Bât. A1, 3 chemin des Cytises  
 F-69340 Francheville  
 info-fr@mehler-technologies.com

**U.K. / Low & Bonar Oldham Ltd.**  
 Hollinwood Business Centre  
 Albert Street, Oldham,  
 Lancs. OL8 3QL  
 info-uk@mehler-technologies.com

**Italy / Low & Bonar Italy S.r.l.**  
 Via Enrico Fermi 52/A  
 I-20019 Settimo Milanese MI  
 info-it@mehler-technologies.com

**Poland / Low & Bonar Poland Sp. z o.o.**  
 ul. Mikołajczyka 31a  
 PL-41-200 Sosnowiec  
 info-pl@mehler-technologies.com

**Latvia / SIA „Low & Bonar Latvia“**  
 Krustpils iela 54 E  
 Rīga, LV-1057  
 info-lv@mehler-technologies.com

**Romania / Low & Bonar Romania S.R.L.**  
 Str. Linia de Centura Nr.2, D2  
 RO-077175 Stefanesti de Jos  
 (Judetul Ilfov)  
 info-ro@mehler-technologies.com

**Turkey / Low and Bonar Turkey  
 Teknik Tekstil Ticaret Limited Sirketi**  
 Başakşehir San. Sit.  
 A Blok No: 22, Başakşehir  
 TR- İstanbul  
 info-tr@mehler-technologies.com

**U.S.A / Low & Bonar Martinsville Inc.**  
 220 B Cabell Street  
 Martinsville, VA 24112  
 info-usa@mehler-technologies.com

**United Arab Emirates /  
 Low & Bonar Middle East Trading LLC**  
 13 Sheikh Rashid Road, Al Garhoud 214  
 Ithraa Tower, Office no. 803  
 Dubai-UAE  
 info-uae@mehler-technologies.com

**India /  
 Low & Bonar India Pvt. Ltd.**  
 924, 9th Floor, Wave Silver Tower, Sector 18,  
 Noida 201 301, UP, India  
 info-in@mehler-technologies.com

**Malaysia /  
 Low & Bonar South East Asia**  
 Suite 20-01 & 20-02B, Level 20,  
 The Pinnacle  
 Persiaran Lagoon Bandar Sunway  
 Subang Jaya, 47500 Malaysia  
 info-mys@mehler-technologies.com

**Russia / Low & Bonar Rus OOO**  
 Sadovnicheskaya embankment 79  
 115035 Moscow  
 info-ru@mehler-technologies.com

**Australia / Low & Bonar Office**  
 PO BOX 339, Waterford West,  
 Queensland 4133, Australia  
 info-aus@mehler-technologies.com

**China / Eusource International**  
 Guangzhou Office  
 R.806 Goayage, Tianyu Garden  
 152 Linhe Zhong Road  
 Guangzhou 510610  
 info-chn@mehler-technologies.com  
 info.chn@mehgjes.com

**Manufacturing and sales**

**Low & Bonar GmbH**  
 Rheinstrasse 11  
 D-41836 Hückelhoven  
 info-de@mehler-technologies.com

**Low & Bonar GmbH**  
 Edeltzeller Strasse 44  
 D-36043 Fulda  
 info-de@mehler-technologies.com

**Low & Bonar Czech s.r.o.**  
 Karla Čapka 1085  
 CZ-512 51 Lomnice nad Popelkou  
 info-cz@mehler-technologies.com